

ALLIED HEALTH PROFESSION (AHPs)

Humber and North Yorkshire AHP Faculty

hyp-tr.hnyahpfaculty@nhs.net

@HNYAHPFaculty



Diagnostic Radiographer



Therapeutic Radiographer



Occupational Therapist



Osteopath



Operating Department Practitioner



Prosthetist



Orthotist



Physiotherapist



Optician



Paramedic



Art Therapist



Dramatherapist



Music Therapist



Dietitian



Speech and language



Podiatrist

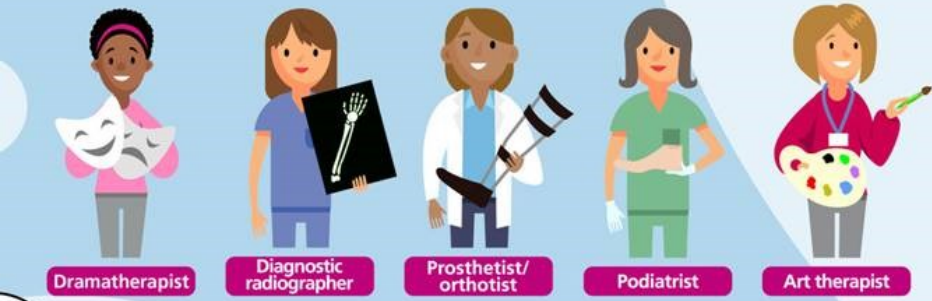
What is an AHP?



Allied Health Professionals refers to 16 different specialised healthcare professionals who work together to provide care for people.

Can you name any of them?

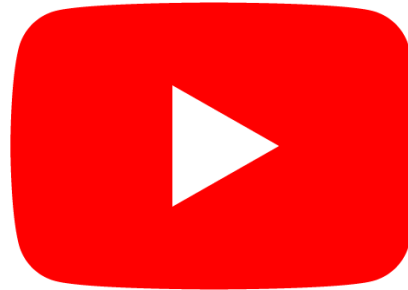




- Orthoptist
- Physiotherapy
- Operating department practitioner
- Osteopath
- Therapeutic Radiographer
- Diagnostic Radiographer
- Dramatherapist
- Prosthetist
- Orthotist
- Podiatrist
- Art therapist
- Speech and Language therapist
- Paramedic
- Dietician
- Music therapist
- Occupational therapist



AHPs in action



The World's Biggest Employers

The employers with the largest workforces worldwide in 2015



Humber and North
Yorkshire
Allied Health
Profession Faculty



Sources: World Economic Forum,
listed organizations

Working in the NHS

- Third largest workforce in the NHS
- Regulated by the Health and Care Professions Council (HCPC)
(Osteopaths are regulated by the General Osteopathic Council)
- Flexible working pattern
- Annual leave allowance
- Pay starts at band 5 (£25,655-£31,534)
- Lots of opportunities to progress!!



How to become an AHP

Degree at University in the chosen profession

Entry requirements:

- A levels
- BTEC Extended Diploma in a relevant subject
- Access to Higher Education Diploma in health studies, health science, nursing or another science-based course



Reach for the stars with your Allied Health Profession (AHP) career!

Click [here](#) to find out more

I'M AT SCHOOL

I'M AT COLLEGE

LOOKING FOR A CAREER CHANGE

I'D LIKE TO RETURN TO AHP PRACTICE

I QUALIFIED OUTSIDE THE UK

I'M STUDYING A NON-AHP COURSE



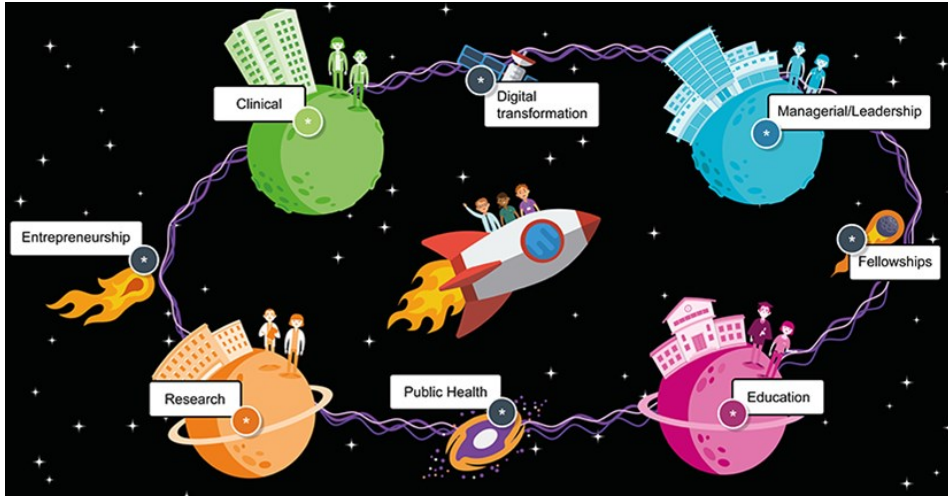
Financial support

- NHS Learning Support Fund (LSF) for Dietetics, Occupational therapy, Operating department practitioner, Orthoptics, Physiotherapy, Podiatry, Radiography (Diagnostic and Therapeutic), Speech and Language therapy and Paramedicine.
- LSF includes a training grant of £5,000 per year and help towards additional travel and accommodation costs to clinical placements plus more!
- Tuition fee loan to cover the full cost of your course.
- Maintenance loan of up to £8,171 per year living with your parents and up to £9,706 per year living away from your parents, slightly more if you study within London.

Career pathways as an AHP



Humber and North
Yorkshire
Allied Health
Profession Faculty



Click [here](#) to find out more





AHP Support Worker

An Allied Health Professional Support Worker is someone who assists an AHP to provide care and support, working under supervision and within agreed guidelines and protocols. You would be an unregistered member of staff meaning you do not need to be registered with the HCPC or have a degree.

In the NHS they are typically employed in Agenda for Change bands 2, 3 and 4.

AHP Support Worker responsibilities can range from performing routine tasks, such as welcoming and preparing service users for treatment, to direct clinical and support tasks such as applying dressings and treatments or helping service users meet their care plans. Support workers are employed in the majority of AHP services, working with registered professionals and providing care and treatment.

AHP Support Worker - case study

Robert Minter is a band 5 support workforce lead at Hull University Teaching Hospitals, a CSP workplace rep and a member of the Associate member Support Worker reference group.

Robert started his NHS career in 2015 as a band 2 Physiotherapy Helper. Within 6 months he'd applied for a band 3 Physiotherapy Assistant role. In 2017 he decided to apply for a level 5 Foundation Degree Higher Apprenticeship. Being dyslexic, he was worried but with support from the college and a colleague he successfully completed the Foundation Degree Apprenticeship with a merit. His ultimate goal is to become a registered member of staff and become a Physiotherapist, as well as developing his skills in the workplace.



Click [here](#) for more inspiration



Allied health professions: support workforce training, education and careers



Click [here](#)
to find out
more

Education and Apprenticeships



Humber and North
Yorkshire
Allied Health
Profession Faculty

Level 3 Apprenticeship - Band 2/3 Support Worker

- Maths and English GCSE or level 2 as an entry requirement.
- Undertake a Level 3 Diploma in Healthcare Support alongside the apprenticeship.
- Induction including a care certificate within your apprenticeship.

Click [here](#) for more information about pay

Level 5 Apprenticeship - Band 4 Support Worker (Assistant Practitioner)

- As well as the above entry requirements, following completion of the level 5 apprenticeship you will gain an accredited level 5 qualification such as a Foundation Degree, other Level 5 Diploma of Higher Education or the Level 5 Diploma for Assistant Practitioners in Healthcare.



Still unsure on the career for you?

Take the NHS career quiz <https://www.healthcareers.nhs.uk/FindYourCareer>

Find your AHP future role <https://aspiringallies.co.uk/quiz/>

Step into the NHS <https://www.stepintothenhs.nhs.uk/careers/take-the-test>

Real life stories <https://www.stepintothenhs.nhs.uk/>

Register for your career guide [here](#)

Experience a day in the life of an AHP with virtual reality, click [here](#)

